

MONTHLY MEMBERSHIP PROGRESS REPORT

District 105SW

Results as of: 5/31/2024

GMT:

LOCATION UNITED KINGDOM

GMT CA

Clubs			
RESULTS FOR 2023-2024			
QUARTER	NEW CLUB GOAL	NEW CLUBS	DROPPED CLUBS
JULY/AUG/SEPT	0	0	2
OCT/NOV/DEC	1	0	0
JAN/FEB/MAR	0	0	0
APR/MAY/JUNE	0	0	0

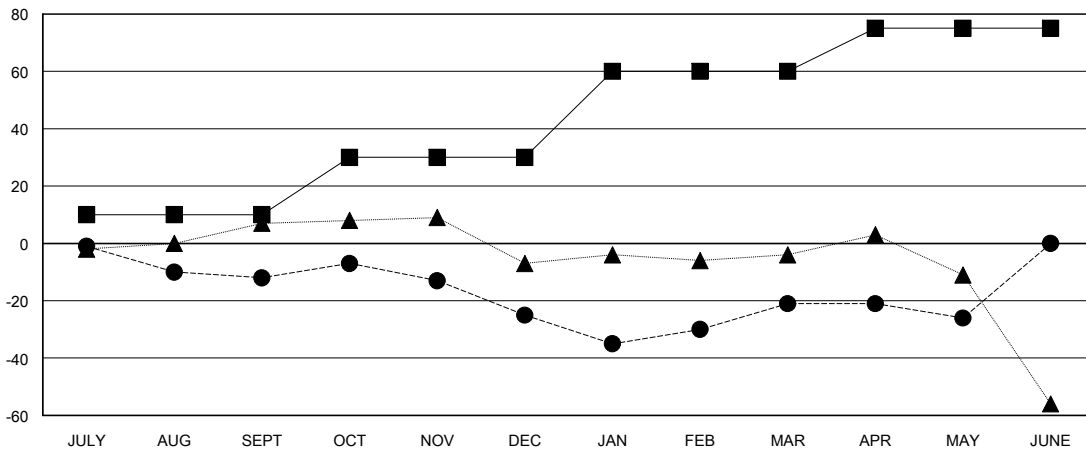
Members			
RESULTS FOR 2023-2024			
QUARTER	MEMBER GROWTH NET GOAL	MEMBER GROWTH ACTUAL	DROPPED MEMBERS ACTUAL (including transfers)
JULY/AUG/SEPT	10	25	33
OCT/NOV/DEC	20	20	33
JAN/FEB/MAR	30	27	23
APR/MAY/JUNE	15	14	19

GOALS AND ACTUAL NEW CLUBS CUMULATIVE



- - CURRENT YEAR GOALS FOR NEW CLUBS
- - CURRENT YEAR ACTUAL NEW CLUBS
- ▲ - LAST YEAR ACTUAL NEW CLUBS

GOALS AND ACTUAL MEMBERS CUMULATIVE



- - MEMBER GROWTH NET GOAL
- - MEMBER GROWTH ACTUAL
- ▲ - LAST YEAR MEMBERSHIP ACTUAL

DROPPED CLUBS: 2	38 CLUBS OF 55 ADDED 1 OR MORE NEW MEMBERS	GENDER DISTRIBUTION MALE 666 (69.59%) FEMALE 291 (30.41%)
DROPPED MEMBERS DECEASED 22 CLUB CANCELLED 0 OTHER 86 TOTAL 108	CLICK HERE FOR CUMULATIVE MEMBERSHIP DATA	TOTAL FAMILY UNIT MEMBERS 113 FAMILY MEMBERS PAYING HALF DUES 57